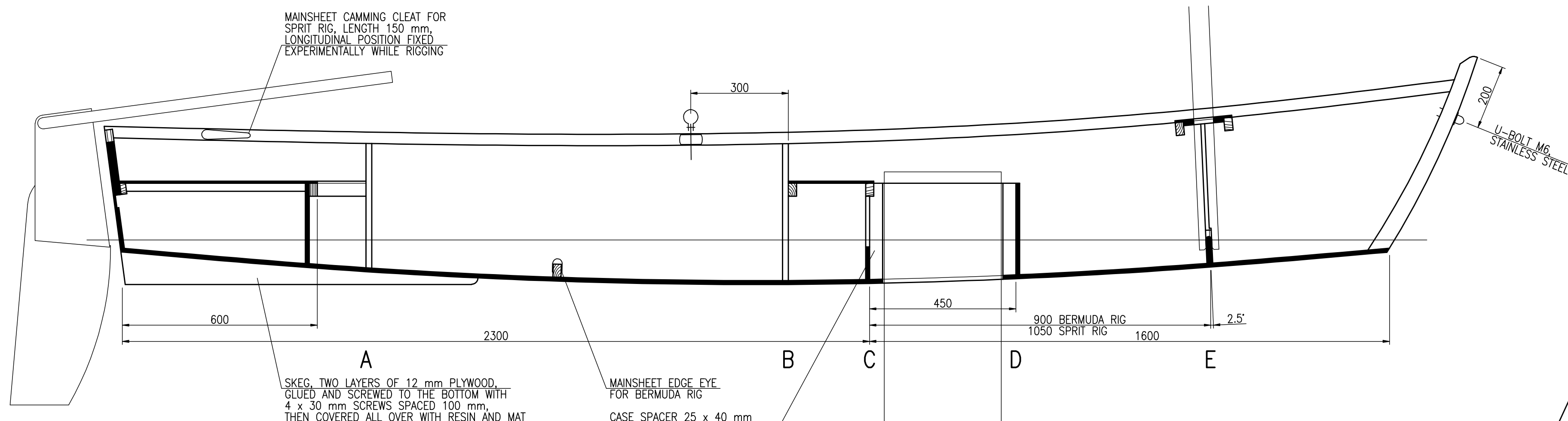


MAIN DIMENSIONS

LENGTH OVERALL
LENGTH OF WATERLINE
BEAM
BEAM OF WATERLINE
DRAFT
DRAFT DAGGERBOARD DOWN
FREEBOARD AFT
FREEBOARD MINIMUM
FREEBOARD FORWARD
VOLUME DISPLACEMENT

L_{OA} 4.20 m
L_{WL} 3.92 m
B 1.40 m
B_{WL} 1.055 m
T_C 0.125 m
T 0.66 m
F_A 0.35 m
F_{MIN} 0.325 m
F_F 0.50 m
V 0.30 m³

MAINSHEET CAMMING CLEAT FOR SPRIT RIG, LENGTH 150 mm, LONGITUDINAL POSITION FIXED EXPERIMENTALLY WHILE RIGGING

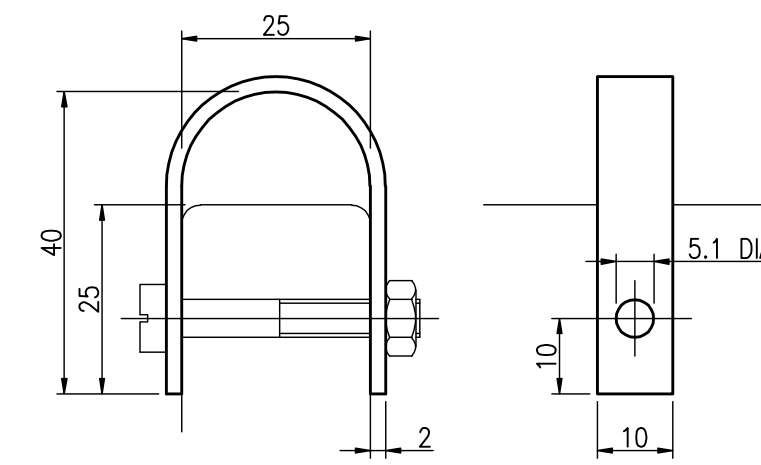


ALL OTHER PLYWOOD TO TIMBER JOINTS GLUED AND NAILED WITH 1.2 x 20 mm NAILS SPACED 50 mm

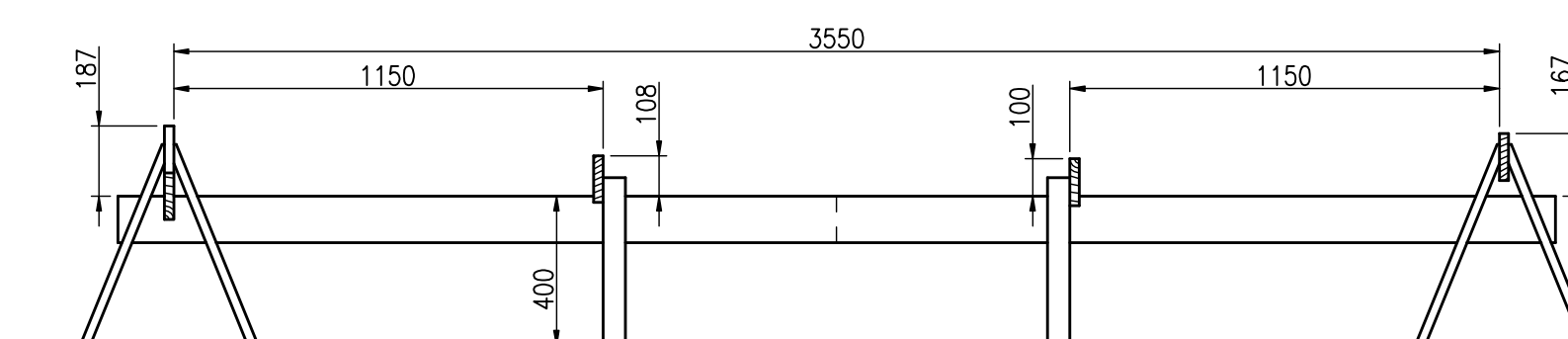
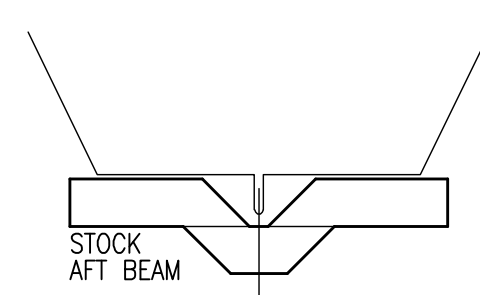
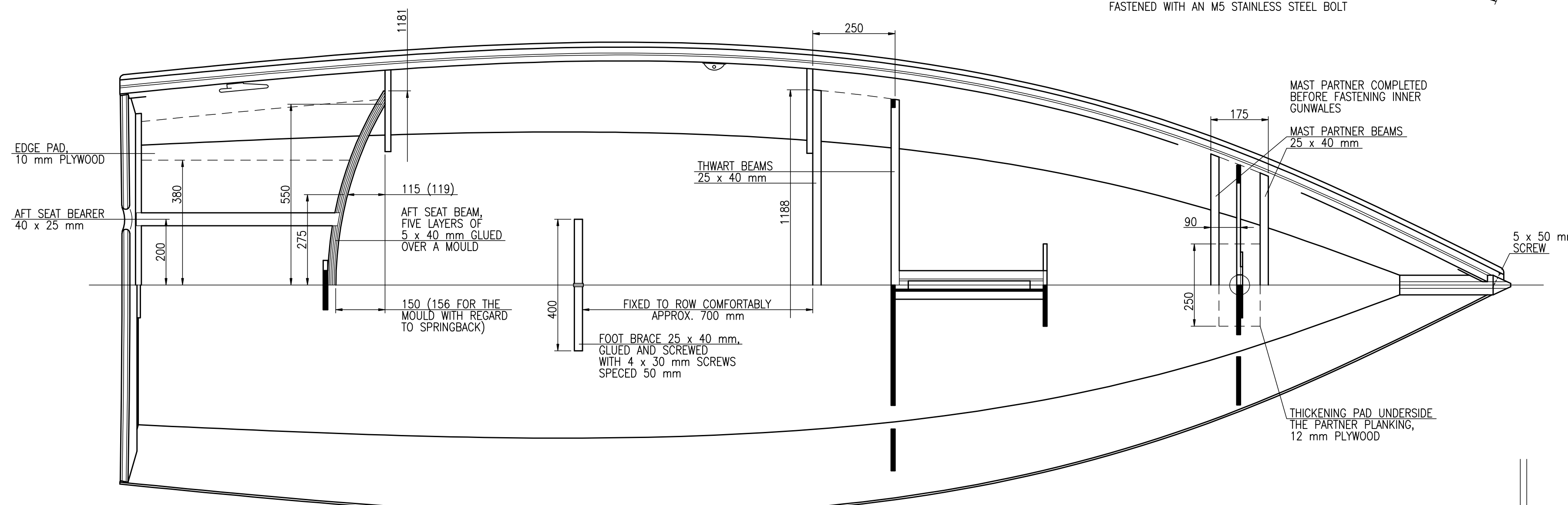
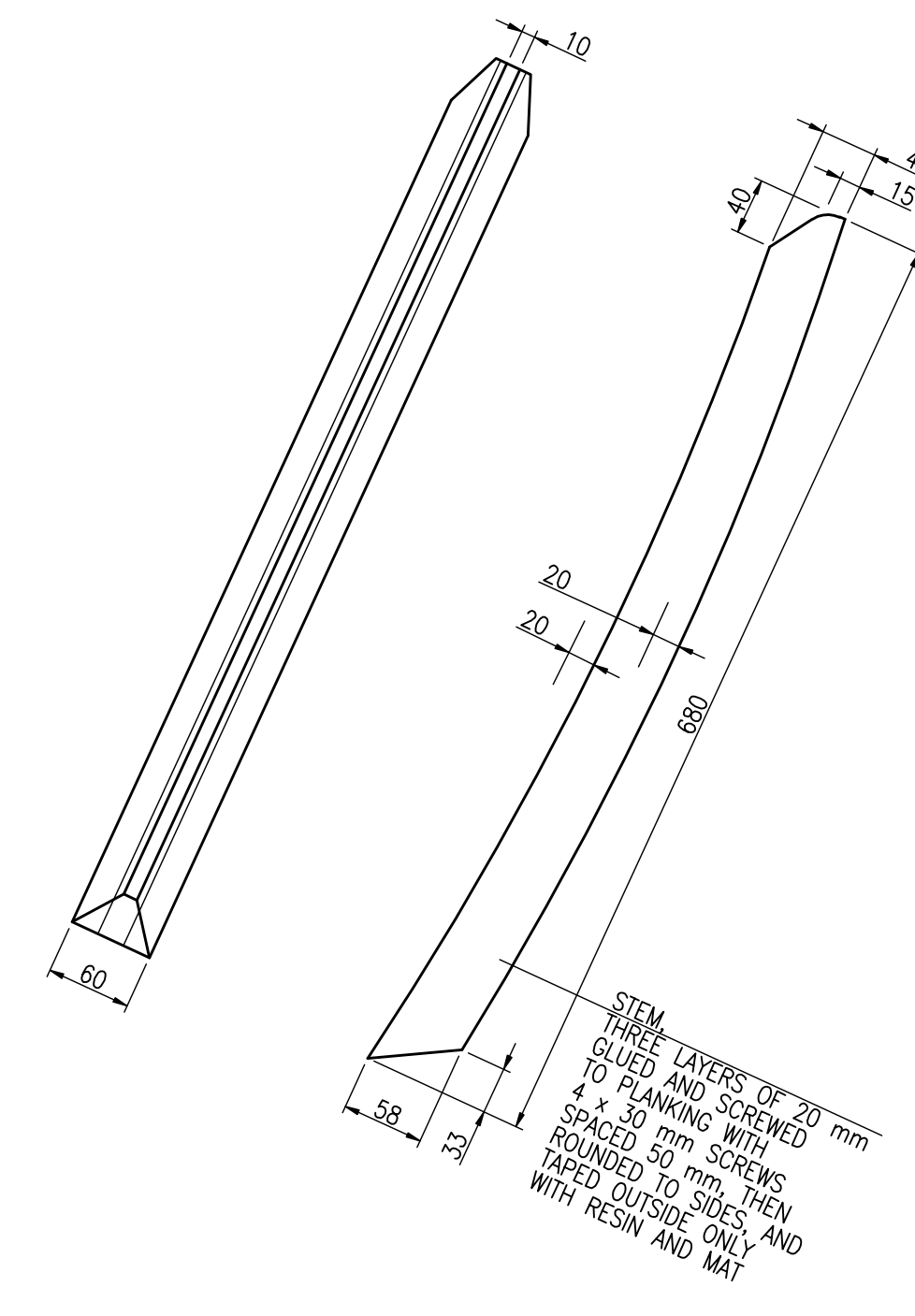
ALL NAILS OF BRASS, ALL SCREWS OF BRASS OR STAINLESS STEEL

ALL PLYWOOD TO PLYWOOD JOINTS WITHOUT TIMBER, FIRST STITCHED WITH 1-1.5 mm COPPER WIRE, THEN TAPED BOTH SIDES WITH EPOXY OR POLYESTER RESIN AND ONE LAYER OF CHOPPED STRAND MAT EACH SIDE. MAT WEIGHT 450 g/m², MAT STRIPS WIDTH 100 mm

AFT SEAT, THWART AND MAST PARTNER TAPED TO THE PLANKING UNDERSIDE ONLY

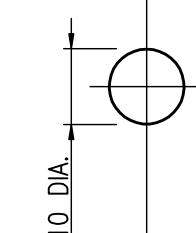
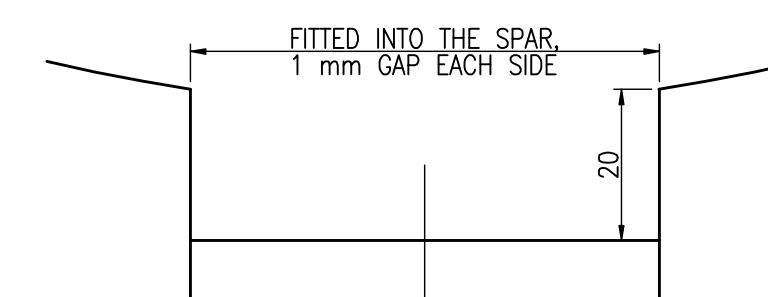


MAINSHEET EDGE EYE
STAINLESS STEEL
FASTENED WITH AN M5 STAINLESS STEEL BOLT

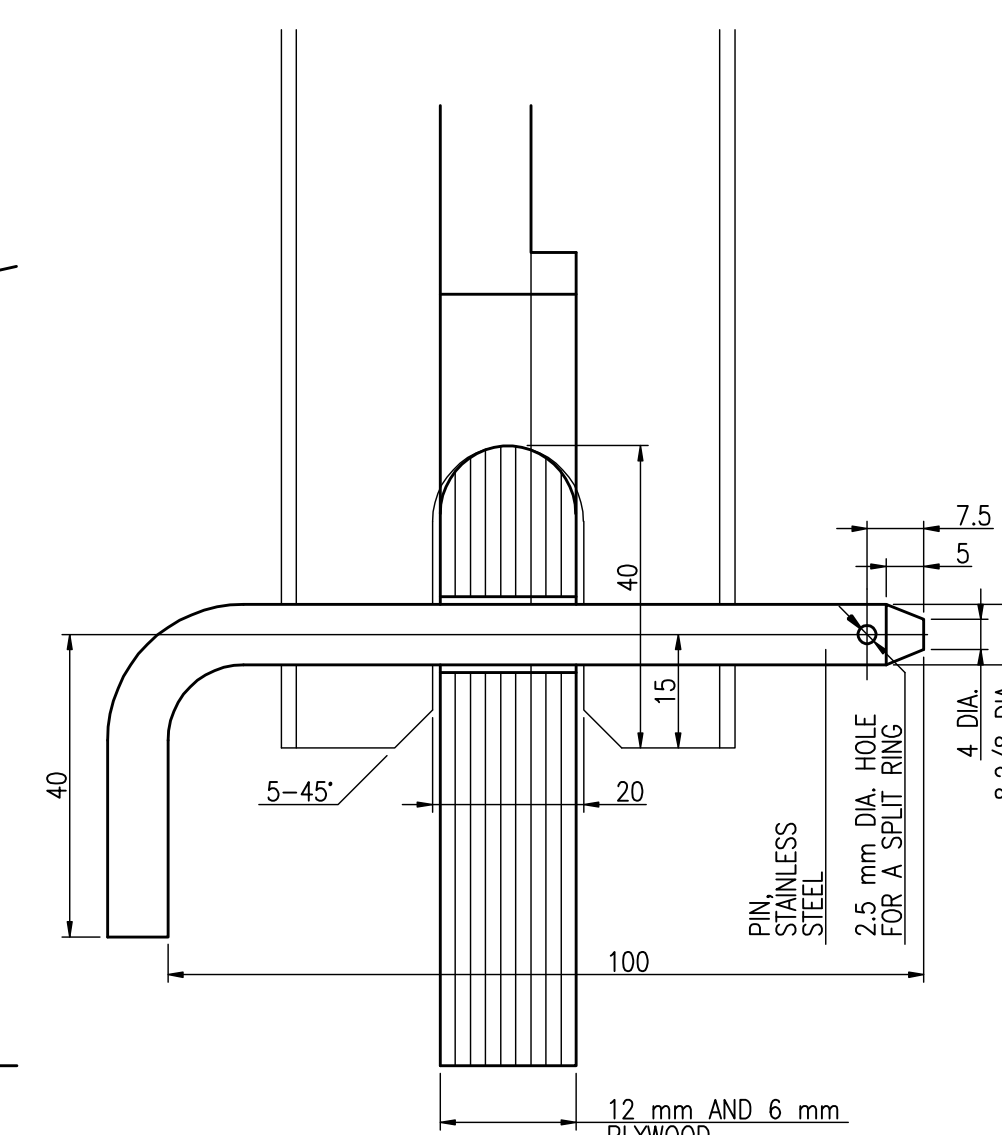


BUILDING STOCK
SCREWED OF LUMBER OR 22 mm PARTICLEBOARD RESAWN INTO 125 mm WIDE PANELS

BOTTOM SET UP ON THE BUILDING STOCK AND POSITIONED TO THE AFT END OF THE DAGGERBOARD CASE SLOT, THEN TEMPORARILY FASTENED WITH FOUR SCREWS TO THE STOCK AMIDSHIP BEAMS



MAST STEP



4.2m

HULL CONSTRUCTION
SHEET 42.2/4, SIZE A1
SCALE 1:1, 1:5, 1:10, 1:20

RADOSŁAW WERSZKO
SEPTEMBER 2008, JANUARY 2011